

GANCHO MULETERO

V 22-03

VISTAS

MODELO GANCHO MULETERO

CLAVE GANCH-M

MATERIAL

- ACERO INOXIDABLE
- TIPO 304
- GRADO SANITARIO-ALMTG
- TERMINADO P3-SATIN
- CALIBRE: 14 (1.9MM)

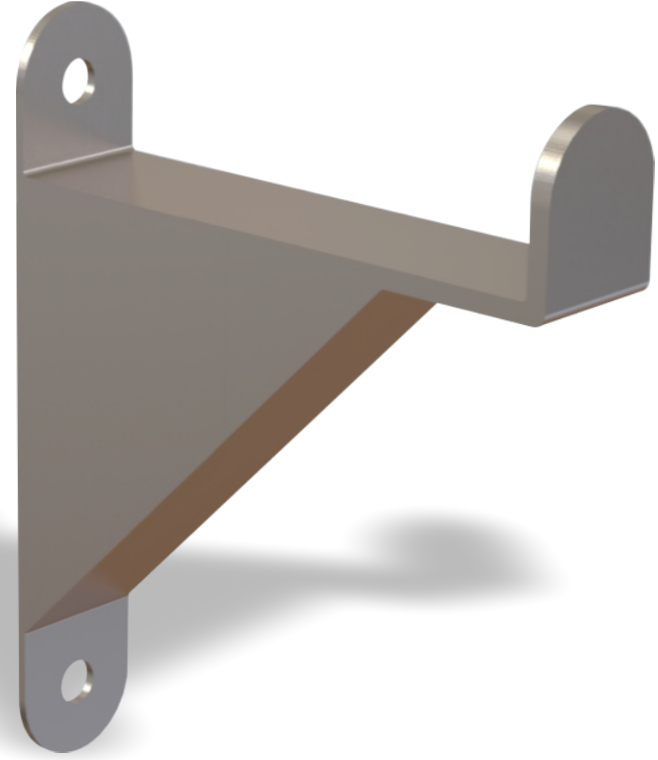
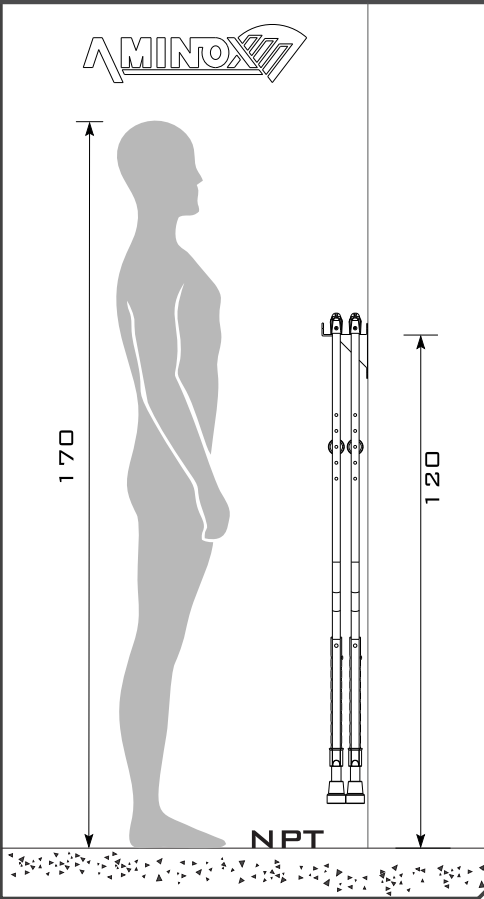
CARACTERÍSTICAS

- FABRICADO TOTALMENTE EN ACERO INOXIDABLE TIPO 304; GRADO SANITARIO ALIMENTICIO.

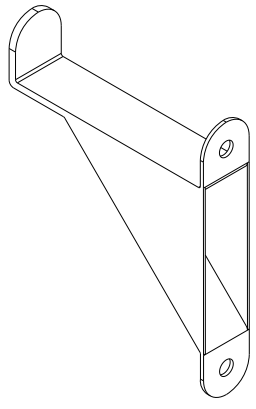
MEDIDAS

- ALTURA 13.0
- FONDO 10.0
- ANCHO 2.5
- GOTAS EN CM

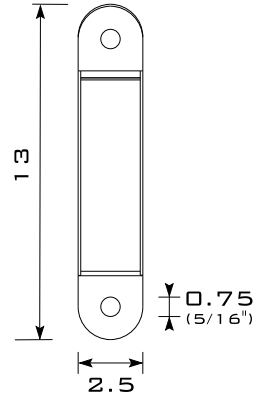
REFERENCIA ERGONOMICA



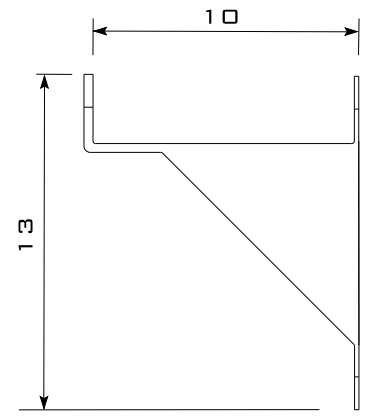
PERSPECTIVA



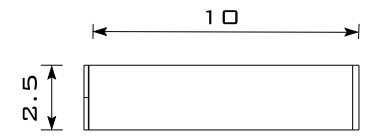
FRONTAL



LATERAL



SUPERIOR



(55) 4992 9517
 (55) 5852 0068
 info@aminox.com.mx



NO INCLUYE

- TORNILLOS, U OTRO MEDIO DE ANCLAJE
- INSTALACIÓN
- MANTENIMIENTO
- MULETAS

INCLUYE

- GANCHO MULETERO DE ACERO INOXIDABLE T-304, CAL-14

